

Panasonic
ideas for life

High Speed Color Scanner
KV-S1025C



impressive

Colour Document Scanner



KV-S1025C



KV-SS080
(Optional Flatbed Scanner)

- Versatile document handling for today's business needs
 - Virtually any type of paper
 - ID cards — including embossed hard cards
 - Mixed paper and hard card batch scanning
 - Long paper scanning (EKG & monitoring systems)
 - Double feed prevention roller system
- Advanced image enhancement and processing
- Easy to operate — Auto application launcher

The Ideal Choice for Your Front Office Document Scanning Needs.

Virtually any type of document, from business card size to legal size, from thin onion skin paper to thick hard ID cards, single sided or double sided, the KV-S1025C can scan them all in colour or black and white.

Fast and reliable, these compact but powerful scanners come with intelligent Image Capture Plus application software that maximises the potential of document scanning with precision reproduction and versatile processing. All of this in a quiet, space saving design that will fit comfortably in most front-office environments.

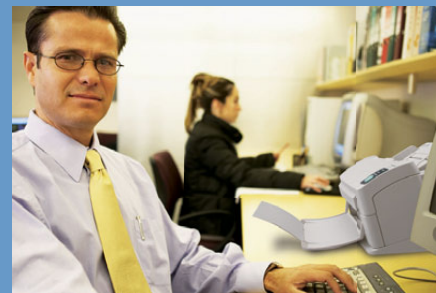
— even tight counter-tops and reception areas.

The KV-S1025C from Panasonic

— the ideal front-office document filing solution.

Desk Side

Sleek and feature-rich, the KV-S1025C can easily be set up on your desktop or at your desk side for convenient access and maximum efficiency. Not only can you scan standard colour business documents, but also business cards, multi-part forms, heavy-stock or thick originals, and even documents of different sizes and thicknesses can all be scanned at the same time — smoothly and easily.



Reception

The KV-S1025C's small footprint allows it to conveniently fit into small spaces, such as reception counters. And since small, thick documents such as ID cards or credit cards can be scanned continuously, you can electronically capture the card's data providing increased accuracy and a more efficient process. These powerful scanners can even combine paper documents; such as registration forms, records and signed releases, with a hard ID card in a single scan.



Versatile applications

No need to pre-sort

Automatic Binary/Color Distinction

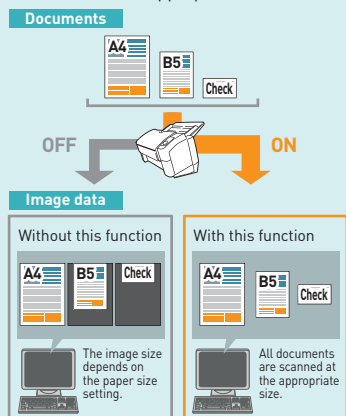
Thanks to Automatic Binary/Color Distinction, you can mix colour and monochrome (B/W) originals at the same time for greater efficiency and reduced data storage.



Eliminates post-processing

Automatic Crop

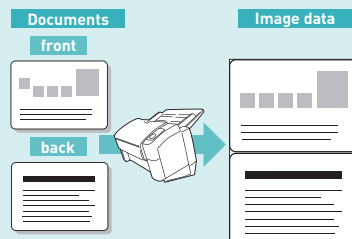
When you scan documents of mixed sizes, the documents are automatically cropped and stored in the appropriate size.



Two-in-one convenience

Double Exposure

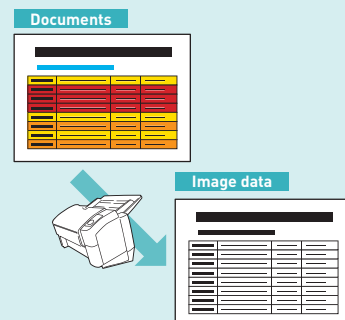
Double Exposure automatically scans then saves two-sided documents into a single page file; ideal for ID cards such as driver's licences and insurance cards, as well as checks and receipts.



Readability and accuracy

Dynamic Threshold

With the Dynamic Threshold function, the background density is automatically detected section by section and the scan setting (brightness control) is automatically adjusted for clearer results as well as OCR accuracy.



High Speed Colour Scanning

Make Your Business More Efficient

25 ppm / 50 ipm High Speed Duplex Scanning

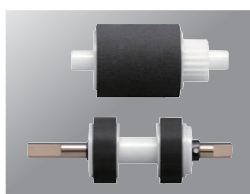
Despite its compact size, the KV-S1025C is ready to scan full-colour double-sided originals at a high speed of up to 25 ppm / 50 ipm. Thanks to its high-resolution 3-Line Colour CCD and advanced image processor, these scanners quickly create clean, crisp, clear and safe digital documents for your electronic filing and content management needs.



Do It All with Just One Scan

Mixed Documents & Multiple ID Card Feeding

Many different types of documents can be scanned thanks to the scanner's advanced automatic document feeder and feed roller system. In fact, multiple documents with thicknesses ranging from 40 g/m² to 209 g/m² index (11 lb to 55 lb) can be scanned at the same time. And these scanners were designed to be able to combine paper documents along with a hard ID card; such as a driver's licence, in single batch. You can even scan a stack of hard cards, including embossed cards continuously via the auto document feeder.



Prevent Scanning Errors

Double-Feed Prevention Roller System

While some scanners emphasise double-feed paper detection, Panasonic's emphasis is double-feed prevention. A newly developed roller material and document feed mechanism effectively prevents most paper jams and double-feeding. And should a feeding error occur, sensors are incorporated to detect the error and warn the operator.



Beautiful Scanning

Advanced Imaging

Thanks to a 3-line colour CCD (charge-coupled device) image sensor with wide-range focusing capability and a high-performance, long-life fluorescent lamp, documents can be clearly imaged and scanned at high resolution. With the KV-S1025C's dual CCD image sensors, both sides of the document are captured simultaneously, effectively doubling its speed.

Quick & Easy Software Start-Up

Automatic Application Launcher

At the touch of a button or simply by inserting a document into the feeder, the scanner can be configured to automatically launch one or more document capture software applications including Panasonic's Image Capture Plus application software. How much easier can it be?

High Information Security

Auto Erasure Security

Security is a key concern for many businesses, institutions and government agencies. That's why Panasonic has incorporated a technology that automatically erases the scanned data stored in its image memory.

Minimal Downtime

Easy Maintenance

Designed for the business environment, its clam-shell design makes it easy for the operator to clean and maintain. And when the long-life rollers are in need of replacement, they can be exchanged in seconds.

It even incorporates a replaceable lens cover to keep potential service costs to a minimum.

Optional Flatbed Scanner

KV-SS080*

Scan books, magazines and irregularly shaped documents all the way up to A4-size with the KV-SS080 Flatbed Scanner. Its compact shape takes up minimal installation space. And when it's combined with the KV-S1025C, it lets you scan documents and books using simple operations, to boost your work efficiency.

* The KV-S1025C is required to operate the KV-SS080.

Save Time by Reducing the Number of Scans

Multi-Crop

Place various sized documents on the flatbed and scan them all at once, then crop whatever parts you need. This is convenient for scanning multiple business cards and thick documents.

Easily Scan Documents and Booklets

Single User Interface

By selectively using the KV-S1025C and the KV-SS080, you can easily scan documents and booklets, and save them as the same scanning data.



KV-S1025C Specifications

Scanning Face	Duplex Sheet Feed Scanning	
Scanning Method	3-Line Colour CCD with white fluorescent lamp	
Scanning Speed*1 (A4, Portrait)	Binary 200 dpi	Up to 25 ppm / 50 ipm
	Colour 200 dpi	Up to 25 ppm / 50 ipm
Optical Resolution (Colour and B/W)	100 - 600 dpi (1dpi step)	
Automatic Detection	Double feed detection (by checking the length of the document)	
Image Compression	JPEG (Greyscale/Colour)	
Image Output	Binary, Greyscale, Colour, MultiStream (Colour & Binary or Grey & Binary)	
Binary Mode Halftone	Dither, Error Diffusion	
Image Control	Automatic Binary/Color Distinction, Multi Color Drop Out, Blank Page Removal, Double Exposure, Smooth Background, Automatic Cropping, De-skewing, Dynamic Threshold, White Level From Paper, Image Emphasis (5 steps), Gamma Correction, Automatic Separation, Noise Reduction, Shadow Removal, Mirror Image, Monochrome Reversing, 2-Page Separation and much more.	
Other Functions	OCR Zone (a function of the Image Capture Plus software that adds characters from the document to the output file name), Patch code detection, Control sheet, Separation sheet	
Document	Size (ADF)	Minimum 48 mm x 70 mm (1.9 in. x 2.8 in.) length Maximum 216 mm x 2,540 mm (8.5 in. x 100 in.) length
	Weight/Thickness*2	Single 40 - 209 g/m ² (11 lbs. - 55 lbs.) Continuous 40 - 209 g/m ² (11 lbs. - 55 lbs.) Card Up to approx. 0.76 mm (0.03 in.) in thickness + embossing (ISO standard 7810 ID-1 card scanning including embossed card)
Automatic Document Feeder	Up to 50 sheets (80 g/m ² , 20 lbs.), 3 hard cards (ISO 7810 ID-1)	
Long Paper Mode	Up to 100 inches (2.54 m)	
Interface	High-Speed USB 2.0, Up to 480 Mbps transfer rate	
Power Requirement	AC 100 - 120 V 50/60 Hz, AC 200 - 240 V 50/60 Hz	
Power Consumption	Scanning mode	32 W
	Idle mode	22 W
	Sleep mode	7 W or less
Operating Environment	Temperature	15 °C - 30 °C (59 °F - 86 °F)
	Humidity	30 % RH - 80 % RH
Storage Environment	Temperature	0 °C - 35 °C (32 °F - 95 °F)
	Humidity	10 % RH - 80 % RH
External Dimensions(W x D x H)	317 mm x 218 mm x 196 mm (12.5 in. x 8.6 in. x 7.8 in.)	
	With Stand and No Feed tray	
Weight	4.2 kg (9.3 lbs.) with stand	
Accessories	CD-ROM : Drivers and Utilities for Windows / Manuals	
	Driver software	ISIS / TWAIN
	Application software	Image Capture Plus*3, RTIV, Quick Scan Pro DEMO, ABBYY® FineReader 7 Professional*4
	Installation Guide, Feed tray, Mixed batch card guide (Pre-installed), AC adaptor & Power cord, USB cable	
Options	Roller Exchange Kit	KV-SS035 (Double-feed prevention roller x 1, Paper feed roller x 1)
	Roller Cleaning Paper	KV-SS03
	Flatbed Scanner	KV-SS080

KV-SS080 Specifications*5

Scanning Face	Flatbed	
Scanning Method	CCD	
Scanning Speed*1	200 dpi 3.6 sec (Binary/Colour)	
Optical Resolution (Colour and B/W)	100 dpi - 600 dpi (1 dpi step)	
Document Size	Maximum 216 mm x 297 mm (8.5 in. x 11.7 in.)	
Interface	USB 2.0	
Power Requirement	AC 100 V - 240 V, 50/60 Hz	
Power Consumption	Scanning mode	17 W
	Idle mode	12 W
	Sleep mode	3.5 W or less
Operating Environment	Temperature	15 °C - 30 °C (59 °F - 86 °F)
	Humidity	30 % RH - 80 % RH
Storage Environment	Temperature	0 °C - 35 °C (32 °F - 95 °F)
	Humidity	10 % RH - 80 % RH
External Dimensions (W x D x H)	287 mm x 518 mm x 83.5 mm (11.3 in. x 20.4 in. x 3.3 in.)	
Weight	3.4 kg (7.5 lbs.)	
Accessories	CD-ROM : Operating Instructions	
	Operating Instructions, AC adaptor, Power cord, USB cable	

DISTRIBUTED BY :

Dimensions

KV-S1025C

(Including attached stand)



KV-SS080



As an ENERGY STAR® partner, Panasonic has determined that this product* meets the ENERGY STAR guidelines for energy efficiency.

* ENERGY STAR product: KV-SS080.



*1: The scanning speed differs depending on the host computer, the operating system, the application, the measuring method, the quantity of data in the image, and the paper type.

The scanning speed is as determined by Panasonic methods of speed measurement.

*2: "Weight in pounds" of paper represents the weight of 500 sheets (432 x 559 mm / 17 x 22 inches).

*3: The supported file types are PDF, PDF/A, Searchable PDF, Searchable PDF/A, JPEG, JPEG2000, TIFF and Bitmap. Searchable PDF and Searchable PDF/A documents can be created for English, French, German, Italian, Spanish, Brazilian Portuguese, Japanese, Korean, Simplified Chinese, and Traditional Chinese. Searchable PDF and Searchable PDF/A documents for Japanese, Korean, Simplified Chinese, and Traditional Chinese can be created when using Operating Systems of the respective languages.

*4: This application software is not included in certain destinations.

*5: The KV-S1025C is required to operate the KV-SS080.

Trademarks and registered trademarks

- ENERGY STAR® and the ENERGY STAR certification marks are registered US marks.
- ABBYY and FineReader are either registered trademarks or trademarks of ABBYY Software Ltd.
- ISIS® and Quick Scan are registered trademarks or trademarks of EMC Corporation in the United States and other countries.
- Microsoft®, Windows® and Windows Vista® are either registered trademarks or trademarks of Microsoft Corporation in the United States and/or other countries.
- All other brand or product names are the property of their respective holders.

Important

- Safety Precaution: carefully read the operating instructions and installation manual before using this product.

- Dimensions and weights are approximate.
- Design and specifications are subject to change without notice.
- These products may be subject to export control regulations.

These products are designed to reduce hazardous chemical substances.

Panasonic